

penn warranty corporation



**pwc**

Over 20 Years Of Service

Unlimited  
Mileage  
Protection

Nationwide  
Service



# STANDARD PROTECTION PLAN

## STANDARD CONTRACT What is Covered?

### ENGINE

- Cylinder block, heads and internal parts (worn or defective)
- Intake and exhaust manifolds
- Oil pan
- Timing drive components
- Valve covers
- Flywheel/flex plate

### SEALS & GASKETS

- Cylinder head gaskets\*
- Intake manifold gaskets\*
- Gaskets covered \*\*

### TRANSMISSION

- Case and internal parts (worn or defective)
- Torque convertor and housing
- Internal switches/solenoids/sensors

### DIFFERENTIAL

- Case and internal parts (worn or defective)
- Drive shaft and universal joints
- Front axle joints on AWD and 4WD
- Front axle joints on FWD

### TRANSFER CASE

- Case and internal parts (worn or defective)

### BRAKES INC. ABS COMPONENTS

- Except linings, pads, rotors and drums

### STEERING

- Steering gear
- Rack and pinion
- Power steering cooler and lines

### SUSPENSION

- Springs/control arms/ball joints

### ELECTRICAL

- Alternator/voltage regulator
- Power door lock actuators
- Starter (incl. drive)
- Wiper motor - front
- Power seat motors
- Power window motors

### COOLING

- Water pump
- Fan & clutch
- Electric radiator fan motor

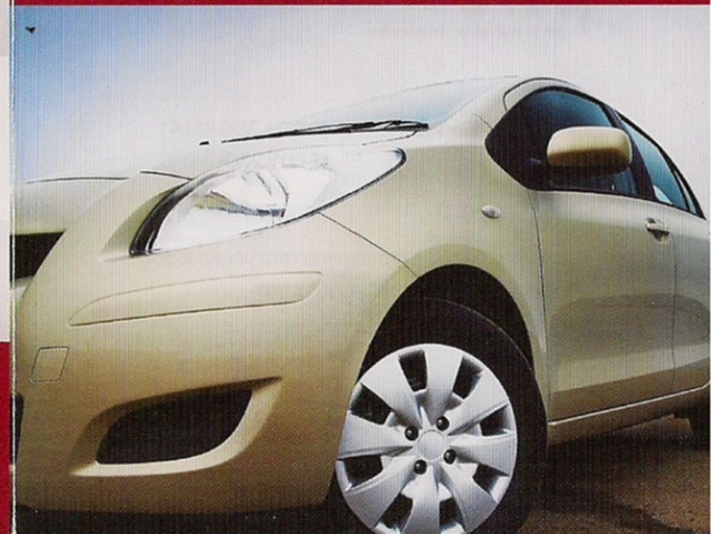
\* Coolant leaks only    \*\* With authorized repair



## WHY CHOOSE A STANDARD PROTECTION PLAN?

- Unlimited Mileage
- Worn or Broken Components
- ABS Brake Systems
- Electrical with some accessories
- Towing Allowance
- Rental Car Allowance
- Renewable
- Transferable

This brochure is intended as a general outline of vehicle coverage. Refer to service contract for specific coverage, term, limitations, and responsibilities. Various state laws may apply.



pennwarrantycorp.com  
(800) 356-9441